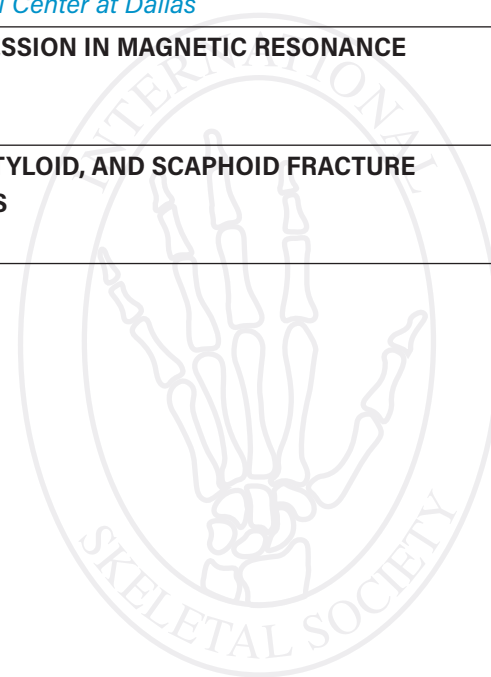


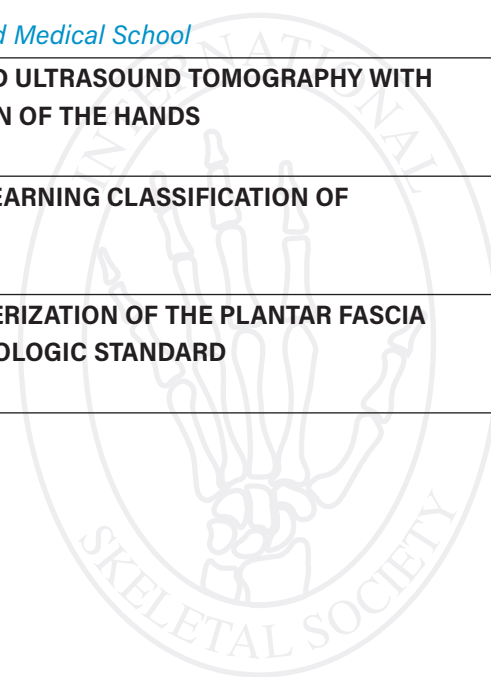
MONDAY, OCTOBER 24, 2022

13:30 - 15:20	Scientific Session I Moderators: <i>Hillary Garner, MD, USA, Patrick Omoumi, MD, PhD, Switzerland</i>
13:30	THE IMAGING APPEARANCE OF TAPE SUTURE <i>Chandana Kurra, MD - University of Florida-Jacksonville</i>
13:40	EVALUATION OF DEEP-LEARNING RECONSTRUCTED HIGH-RESOLUTION 3D CERVICAL SPINE MRI TO IMPROVE FORAMINAL STENOSIS EVALUATION <i>Darryl Sneag, MD - Hospital for Special Surgery</i>
13:50	EARLY DIFFUSE TENOSYNOVIAL GIANT CELL TUMOR OF THE HIP LEADS TO LOCALIZED INFLAMMATORY ARTHROPATHY <i>Yaxia Zhang, MD, PhD - Hospital for Special Surgery</i>
14:00	3D HIGH RESOLUTION ISOTROPIC HIP MRI OF ADULT DEVELOPMENTAL DYSPLASIA: EXTENT OF LABRAL TEAR CORRELATES WITH WORSENING HYALINE CARTILAGE DAMAGE <i>Yaxia Zhang, MD, PhD - Hospital for Special Surgery</i>
14:10	KNEE DEEP! UNDERSTANDING FIELD HOCKEY RELATED KNEE INJURIES <i>Rola Husain, MD - Vancouver General Hospital -UBC Hospital</i>
14:20	OSTEOLYSIS OF THE ULNAR STYLOID FOLLOWING RADIUS FRACTURE: PREVALENCE AND ASSOCIATED FINDINGS <i>Zhongyi Chen, MD - McGill University Health Center</i>
14:30	COMPARISON BETWEEN 2D TSE AND 3D SPACE IN THE EVALUATION OF CRANIOCERVICAL LIGAMENTS <i>Bo Mi Chung, MD, PhD - Chung-Ang University Hospital</i>
14:40	CLINICAL IMPACT OF WHOLE-BODY MRI IN STAGING AND SURVEILLANCE OF PATIENTS WITH MYXOID LIPOSARCOMA: A 14-YEAR SINGLE-CENTER EXPERIENCE <i>Samir Paruthikunnan, MD, MBBS, FRCR, M.MED - York and Scarborough Teaching Hospitals NHS Foundation Trust</i>
14:50	SINGLE PLANE 3D ISOTROPIC MR IMAGING OF SHOULDER EXHIBITS SUPERIOR CORRELATIONS TO SURGICAL FINDINGS THAN 2D MULTIPLANAR MR IMAGING <i>Shamrez Haider, BSA - University of Texas Southwestern Medical Center at Dallas</i>
15:00	LOW-DOSE FERUMOXYTOL INFUSION FOR VASCULAR SUPPRESSION IN MAGNETIC RESONANCE NEUROGRAPHY OF THE BRACHIAL PLEXUS <i>Darryl Sneag, MD - Hospital for Special Surgery</i>
15:10	CLINICAL VALIDATION OF AI BASED DISTAL RADIUS, ULNAR STYLOID, AND SCAPHOID FRACTURE DETECTION MODEL ON CONVENTIONAL WRIST RADIOGRAPHS <i>Hee-Gone Lee, MD - Anam Hospital, Korea University</i>



MONDAY, OCTOBER 24, 2022

15:30 - 17:20	Scientific Session II Moderators: <i>James Griffith, MD, MRCP, FRCR, Hong Kong, Anna Hirschmann, MD, Switzerland</i>
15:30	WHOLE BODY MRI IN PEOPLE WITH NF1, NF2 AND SCHWANNOMATOSIS: ARE QUALITATIVE AND QUANTITATIVE IMAGING FEATURES COMPARABLE TO LOCALIZED MRI? <i>Patrick Debs, MD - Johns Hopkins University</i>
15:40	COMMERCIALY AVAILABLE ARTIFICIAL INTELLIGENCE ALGORITHM IMPROVES RADIOLOGISTS' PERFORMANCES FOR FRACTURE DETECTION, ON A CHALLENGING DATASET OF WRIST AND HAND RADIOGRAPHS, COMPARED TO A CT-BASED GROUND TRUTH <i>Thibaut Jacques, MD, MSc - Lille University Hospital, Lille, France</i>
15:50	CLINICAL AND RADIOGRAPHIC PROGRESSION OF OSTEOARTHRITIS IN PATIENTS WITH MENISCUS SURGERY <i>Sean Hormozian, BS - Chicago Medical School at Rosalind Franklin University of Medicine and Science</i>
16:00	RADIOGRAPHIC PROGRESSION OF OSTEOARTHRITIS IN PATIENTS WITH INTRAARTICULAR HYALURONIC ACID INJECTIONS AND CORTICOSTEROID INJECTIONS <i>Azad Darbandi, MS - Chicago Medical School at Rosalind Franklin University of Medicine and Science</i>
16:10	DIABETES-ASSOCIATED THIGH MUSCLE DEGENERATION CAN MEDIATE THE RISK OF SYMPTOM WORSENING IN PATIENTS WITH CO-EXISTING DIABETES AND KNEE OSTEOARTHRITIS-RELATED: DATA FROM OSTEOARTHRITIS INITIATIVE <i>Shadpour Demehri, MD - Johns Hopkins University</i>
16:20	ESSR AWARD PAPER: THE ORIGIN OF LUMBAR SYNOVIAL CYSTS AND THE SPACE OF OKADA: AN EXPERIMENTAL CT-ARTHROGRAPHIC STUDY IN HUMAN SPECIMEN <i>Gebhard Schmid, MD - St. Augustinus Gruppe, Germany</i>
16:30	AMS AWARD PAPER: THE THERAPEUTIC EFFECT OF GENICULATE NERVES RADIOFREQUENCY ABLATION FOR CHRONIC KNEE PAIN <i>Nizar Al Nakshabandi MD, FRCPC - King Saud University Hospitals</i>
16:40	SSR AWARD PAPER: SHEAR WAVE SPEED AS A USEFUL BIOMARKER OF TENDON HEALTH: CORRELATION WITH CONVENTIONAL US AND CLINICAL SCORES IN A BLINDED RANDOMIZED PLACEBO-CONTROLLED TRIAL FOR TREATMENT OF JUMPER'S KNEE <i>Zachary Stewart, MD - Massachusetts General Hospital/Harvard Medical School</i>
16:50	ISS EARLY CAREER GRANT 1: COMPARISON OF 3D AUTOMATED ULTRASOUND TOMOGRAPHY WITH STANDARD HANDHELD ULTRASOUND FOR THE VISUALIZATION OF THE HANDS <i>Jonas Getzmann, MD - University Hospital Zurich</i>
17:00	ISS EARLY CAREER GRANT 2: RADIOMICS-BASED MACHINE-LEARNING CLASSIFICATION OF LIPOMATOUS SOFT-TISSUE TUMORS OF THE EXTREMITIES <i>Salvatore Gitto, MD - IRCCS Orthopedic Institute Galeazzi</i>
17:10	ISS EARLY CAREER GRANT 3: 3T UTE AND ZTE MRI: CHARACTERIZATION OF THE PLANTAR FASCIA ENTHESES COMPARED WITH CONVENTIONAL MRI AND A HISTOLOGIC STANDARD <i>Karen Cheng, MD - University of California - San Diego</i>



TUESDAY, OCTOBER 25, 2022

14:00 - 15:00	Breakout Session Program Moderators: <i>Connie Chang, MD, USA, Omar Albtoush, MD, Jordan</i>
14:00	THE ROLE OF ENTONOX IN PAEDIATRIC ULTRASOUND GUIDED MUSCULOSKELETAL INTERVENTION WITHIN THE RADIOLOGY DEPARTMENT <i>Huw Walters, MB BChir - Oxford University Hospitals NHS Trust</i>
14:06	NEUROPATHY SCORE REPORTING AND DATA SYSTEM (NS-RADS): MR IMAGING REPORTING GUIDELINE WITH MULTI-INSTITUTIONAL VALIDATION STUDY OF PERIPHERAL NEUROPATHY <i>Bayan Mogharrabi - University of Texas Southwestern Medical Center at Dallas</i>
14:12	ASSOCIATION BETWEEN MRI FINDINGS OF KNEE JOINT TRAUMA AND SUBACUTE SYNOVIAL FLUID INFLAMMATORY BIOMARKER LEVELS AFTER ACL INJURY <i>Richard Kijowski, MD - NYU Medical Center/ Hospital for Joint Diseases Langone Medical Center</i>
14:18	NTRK GENE REARRANGED SOFT TISSUE TUMORS: IMAGING APPEARANCE AND CLINICOPATHOLOGIC CORRELATION <i>Matthew Spano, MD - Memorial Sloan Kettering</i>
14:24	INCIDENTAL FINDINGS IN WHOLE BODY MRI IN PEOPLE WITH SCHWANNOMATOSIS <i>Eumee Cha - Johns Hopkins University</i>
14:30	IATROGENIC "OVERSHOOT" NERVE INJURIES DURING FRACTURE ORIF: IMAGING FEATURES <i>Yoshimi Endo, MD - Hospital for Special Surgery</i>
14:36	REVISITING THE DISTAL ANTERIOR FEMORAL METAPHYSEAL DEFECT IN ADOLESCENTS: AN ANATOMIC VARIANT OR A SIGN OF PATELLOFEMORAL MALTRACKING? <i>Tatiane Cantarelli Rodrigues, MD - Hospital do Coração (HCOR)</i>
14:42	OPTIMIZATION OF DIFFUSION-TENSOR IMAGING OF LUMBAR NERVE ROOTS <i>Julie Legrand, MD - Lille Catholic University Hospitals</i>
14:48	WITHDRAWN
14:54	STATIN USE MAY BE ASSOCIATED WITH SMALL DECLINE IN THIGH MUSCLE QUALITY IN MRI BIOMARKERS: A PROPENSITY-SCORE MATCHED COHORT STUDY <i>Ali Guermazi, MD - Boston University</i>

